

①

Find the diagonal of a square whose perimeter is 40.

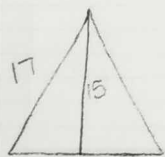
②

Can the following be the measures of sides of a right triangle?

③

Bob walks due north 5 miles then due east 4 miles. How far is he away from starting point?

④



What is the perimeter of the isosceles triangle?

⑤

What is the distance of a line segment that has the following endpoints?
 $(2, 9)$ $(-7, 4)$

⑥

$$5x^3 = 1080$$

⑦

$$2 + 3x^2 = 245$$

8

$$25x^2 = 16$$

9

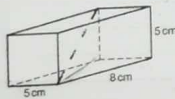
The volume of a cube is 729cm^3 .
What is the length of a side?

10

The volume of a cylinder is $200\pi\text{cm}^3$. What is the length of the radius if the height of the cylinder is 2cm ?

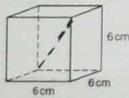
11

Find the length of the diagonal



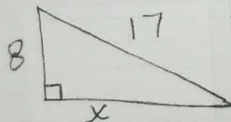
12

Find the length of the diagonal.

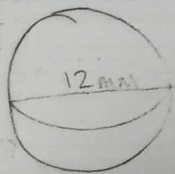


13

Find x .



14



What is the volume of the sphere?

U6 Test Review

Key

Musical Math

- ① $\sqrt{200} \approx 14$ units
- ② NO 9, 15, 20
- ③ $\sqrt{41 \text{ mi}} \approx 6 \text{ mi}$
- ④ 50 units
- ⑤ $\sqrt{106}$ units ≈ 10 units
- ⑥ 6
- ⑦ ± 9
- ⑧ $\pm \frac{4}{5}$
- ⑨ 9 cm
- ⑩ 10 cm
- ⑪ $\sqrt{114} \approx 11 \text{ cm}$
- ⑫ $\sqrt{108} \approx 10 \text{ cm}$
- ⑬ 15
- ⑭ $288\pi \text{ m}^3 \approx 904.32 \text{ mm}^3$

$$\begin{aligned} \textcircled{8} \quad \frac{25x^2}{25} &= \frac{16}{25} \\ \sqrt{x^2} &= \sqrt{\frac{16}{25}} \\ x &= \pm \frac{4}{5} \end{aligned}$$