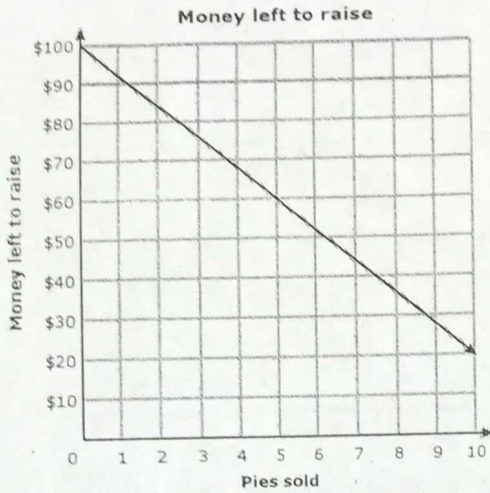


Reading graphs-Unit 7 Functions

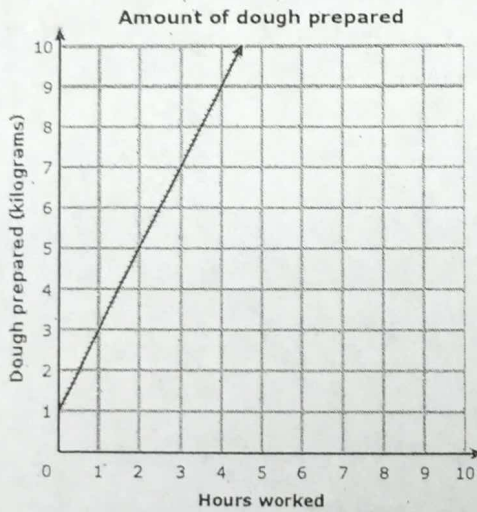
Name: \_\_\_\_\_

1. This graph shows how the amount of money left to raise is related to the number of pies that Kenny has sold.



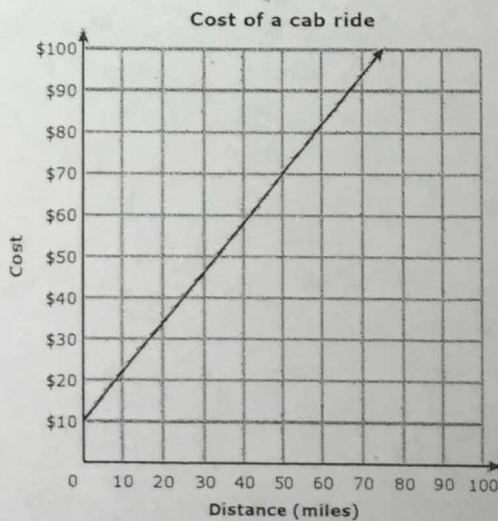
After Kenny sells 5 pies, how much money will he still have to raise? \_\_\_\_\_

2. This graph shows how the amount of dough Frank has prepared is related to the number of hours he has spent working at the bakery.



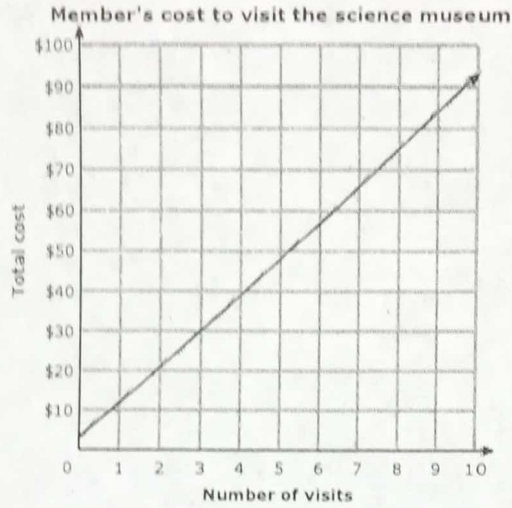
How many hours did Frank work if he prepared 8 kilograms of dough? \_\_\_\_\_

3. This graph shows how the cost of a cab ride depends on the distance in miles.



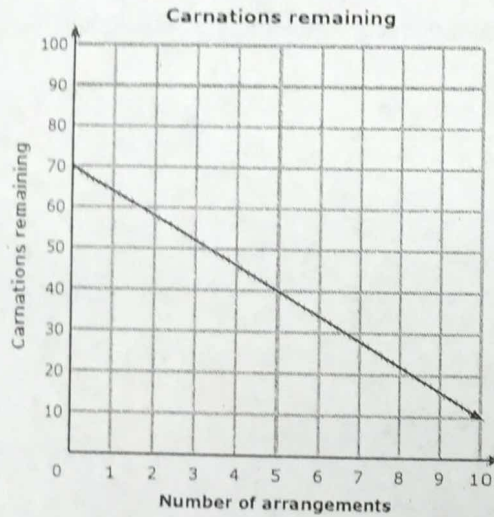
If a cab ride is 50 miles long, how much will it cost? \_\_\_\_\_

4. This graph shows how the total cost of visiting the science museum as a member is related to the number of visits.



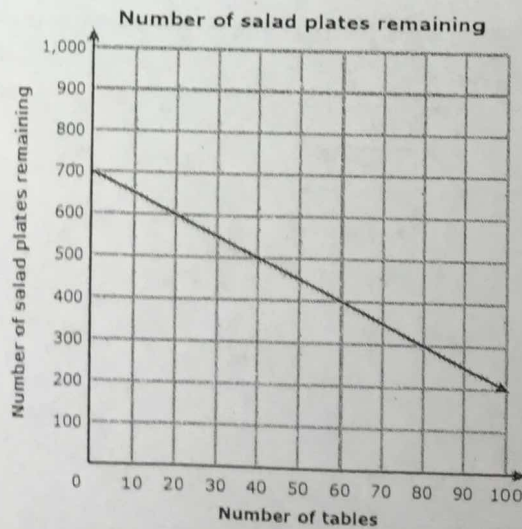
For a member of the science museum, what is the total cost of 3 visits? \_\_\_\_\_

5. This graph shows how the number of carnations Roshawna, a florist, has left is related to the number of arrangements she puts together.



If Roshawna puts together 5 arrangements, how many carnations will she have left? \_\_\_\_\_

6. This graph shows how the number of salad plates that Stanley has left is related to the number of tables that he has set.



How many tables does Stanley need to set in order to have just 300 salad plates left to distribute? \_\_\_\_\_