

This year students have a chance for recovery grades on quizzes and tests if they score below 70%. They must complete a remediation assignment and come to school at the assigned time in order to take advantage of this opportunity. The highest grade they will be given on a recovery assignment is a 70%.

Your child scored below 70% on the following quiz/test: Unit 4 Test

Remediation assignment:

1 - Redo unit 4 Review attached, Station #1, and Station #2.

2 – Read and study all of the Textbook Lessons: 1(page 277), 2(page 285), 3(page 297), 4(page 305), 5(page 317), 6(page 329), and 4(page 379).

Parent Signature _____

Make up time: Mon. 11/28 at 8:15

Students will not be allowed to take the makeup test without the remediation work and a parent signature.

This year students have a chance for recovery grades on quizzes and tests if they score below 70%. They must complete a remediation assignment and come to school at the assigned time in order to take advantage of this opportunity. The highest grade they will be given on a recovery assignment is 70%.

Your child scored below 70% on the following quiz/test: Unit 4 Test

Remediation assignment:

1 - Redo unit 4 Review attached, Station #1, and Station #2.

2 – Read and study all of the Textbook Lessons: 1(page 277), 2(page 285), 3(page 297), 4(page 305), 5(page 317), 6(page 329), and 4(page 379).

Parent Signature _____

Make up time: Mon. 11/28 at 8:15

Students will not be allowed to take the makeup test without the remediation work and a parent signature.

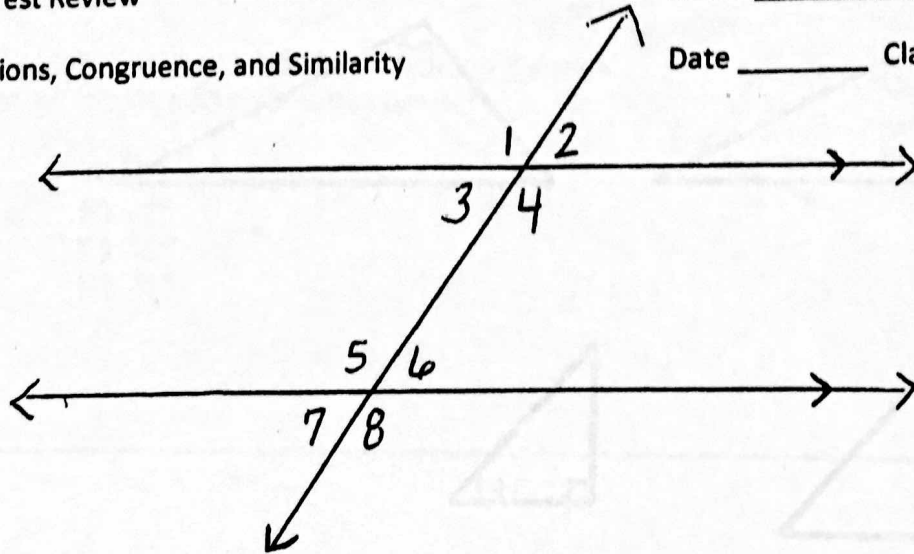
Unit 4 Test Review

Unit 4 Post Test Review

Transformations, Congruence, and Similarity

Name _____

Date _____ Class _____

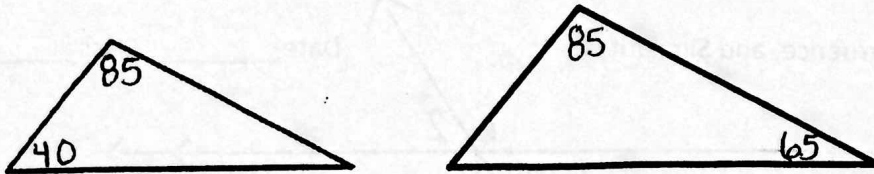


Using correct vocabulary describe the angle relationship between the two given angles if possible. Determine if the angles are congruent or supplementary.

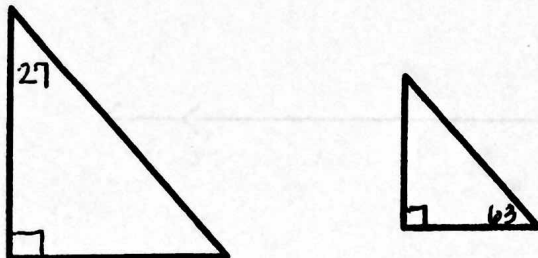
1. 1 and 5
2. 1 and 4
3. 1 and 2
4. 1 and 8
5. 3 and 6
6. 3 and 4
7. 4 and 5
8. 2 and 7
9. 4 and 8
10. 5 and 8
11. 1 and 6

Determine if the given triangles are similar. Why or why not.

12.

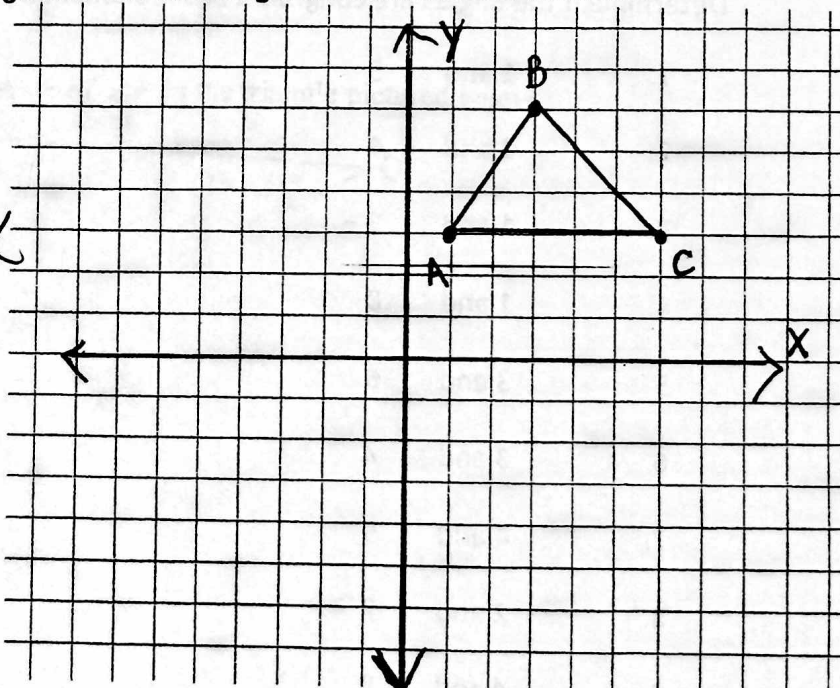


13.



Use the preimage to create an image with the following transformations or dilations.

Show all math work on notebook paper!



14. $(x + 3, y - 2)$

15. $(\frac{5}{3}x, \frac{5}{3}y)$

16. Reflect over the y-axis

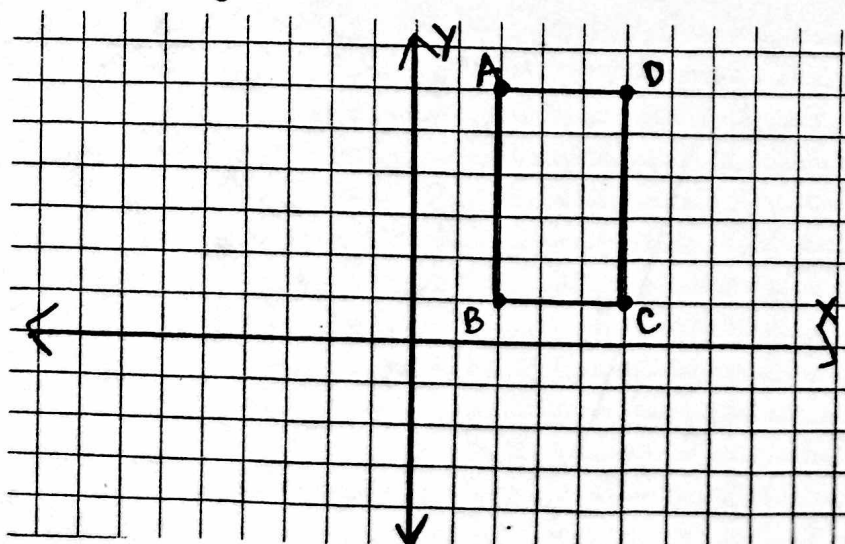
17. Reflect over the x-axis

18. Rotate 90° clockwise

19. Rotate 90° counterclockwise

20. Rotate 180°

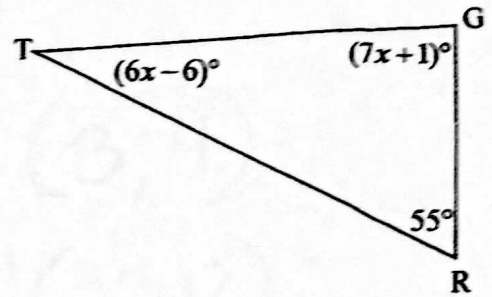
21. What are the new coordinates of rectangle ABCD if it is rotated 90° counterclockwise, reflected over the x-axis, and then translated 3 units to the right?



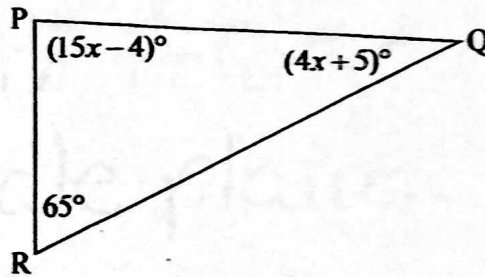
2- Complete the 3 problems. Station #1

1. Multiple Choice: What is the correct measure of $\angle T$ in the triangle pictured below?

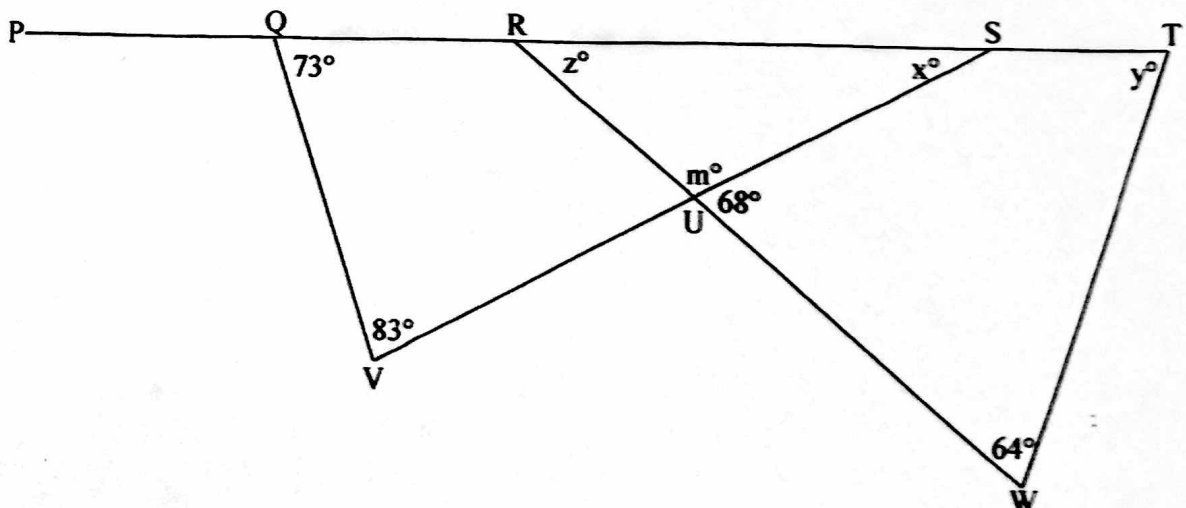
- A) 10°
- B) 12°
- C) 54°
- D) 71°



2: Determine the measure of $\angle P$ in the triangle pictured below.



3: Determine the measures of all unknown angles in the figure below:



① Describe a series of events that will transform triangle ABC to $A'B'C'$.

$$A(-4, -2)$$

$$A'(3, 4)$$

$$B(-8, -7)$$

$$B'(-2, 8)$$

$$C(-1, -9)$$

$$C'(-4, 1)$$

* Graph both triangles on the coordinate plane then solve.

② Describe a series of events that will transform rectangle ABCD to rectangle A'B'C'

$$A(4, 2)$$

$$B(4, 6)$$

$$C(8, 2)$$

$$D(8, 6)$$

$$A'(-2, 2)$$

$$B'(-6, 2)$$

$$C'(-2, -2)$$

$$D'(-6, -2)$$

* Graph both rectangles on the coordinate plane then solve.