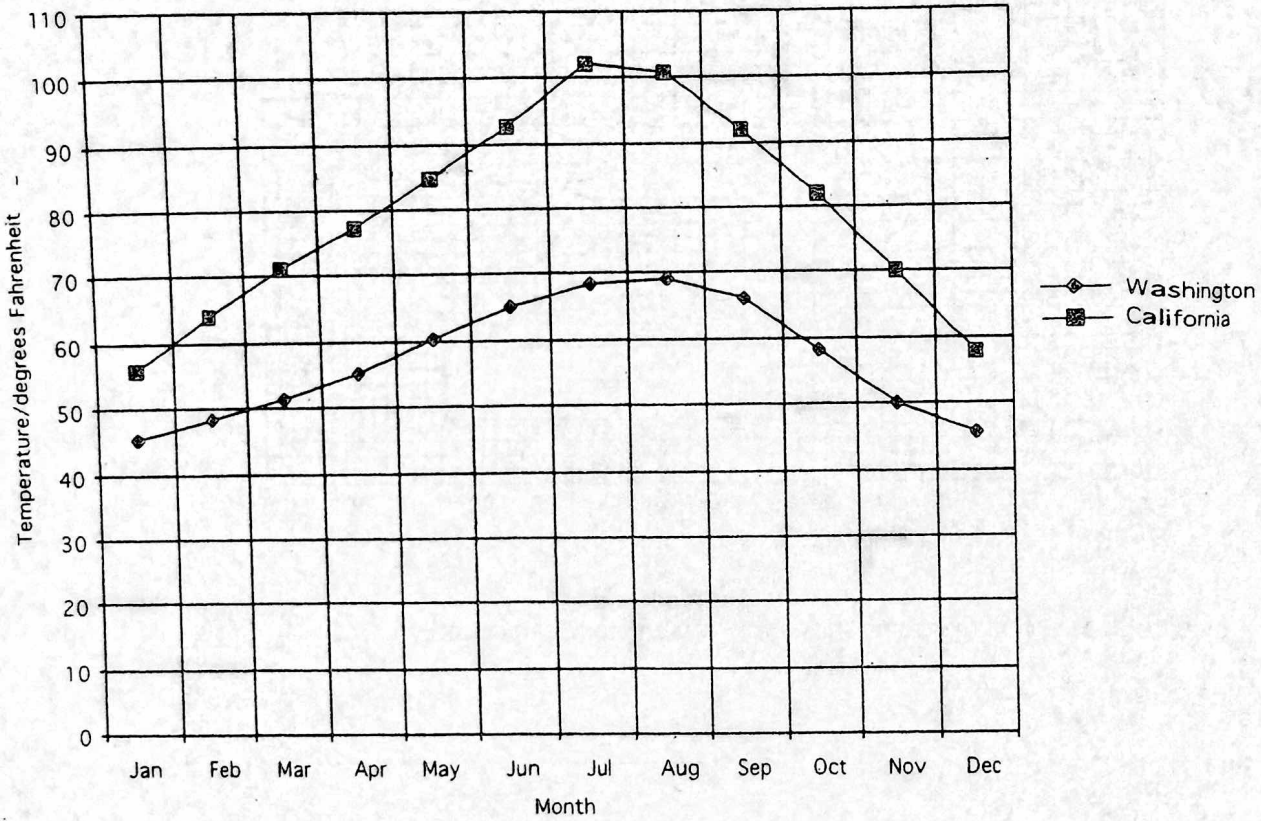


Temperatures

This graph shows the highest average temperatures for each month of the year for one place in Washington and one place in California.

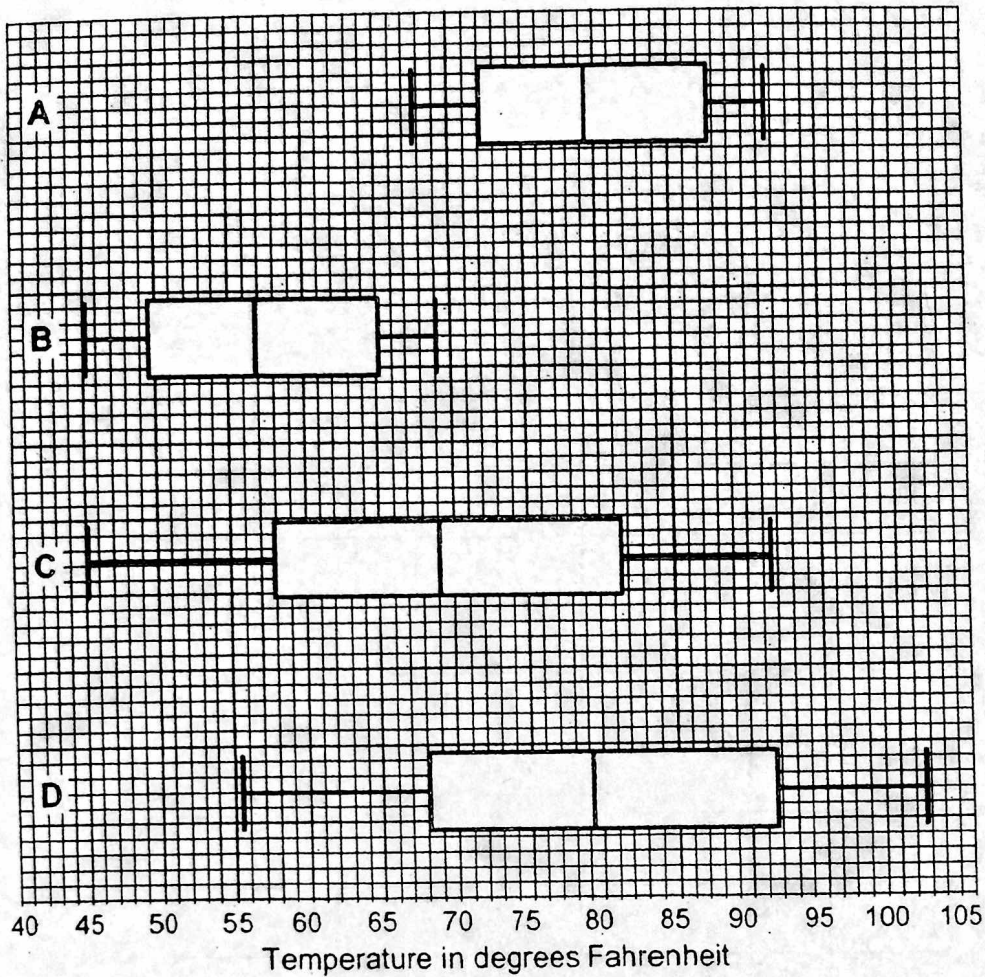


1. Write two statements about what is the same and what is different in the two sets of temperatures.

(i) _____

(ii) _____

Box and whisker temperature diagrams



2. Which of the four box diagrams shows the Washington temperatures? _____

Explain how you decided.

3. Which of the four box diagrams shows the California temperatures? _____

For which months of the year is the maximum monthly temperature for California between the upper and the lower quartiles?

Explain how you figured it out.
